

PROACT.®

PA175

Pantaloni donna

- Tessuto morbido e idrorepellente per un comfort ottimale.
- Taglio dritto.
- 2 tasche laterali profonde e 2 tasche posteriori

96% Poliestere / 4% Elastan. Tessuto morbido e resistente all'acqua per il massimo comfort. Taglio dritto. Cintura con passanti, 2 tasche laterali e 2 tasche profonde a filetto con pattina sul retro.



38 IT (34 FR) 40 IT (36 FR) 42 IT (38 FR) 44 IT (40 FR) 46 IT (42 FR) 48 IT (44 FR) 50 IT (46 FR) 160 g/m²



Certificazioni



Informazioni complementari

Logistica



1



20



CN - Cina
VN - Vietnam

Codice doganale

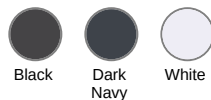


62046318

Disponibile anche nella versione



PA174



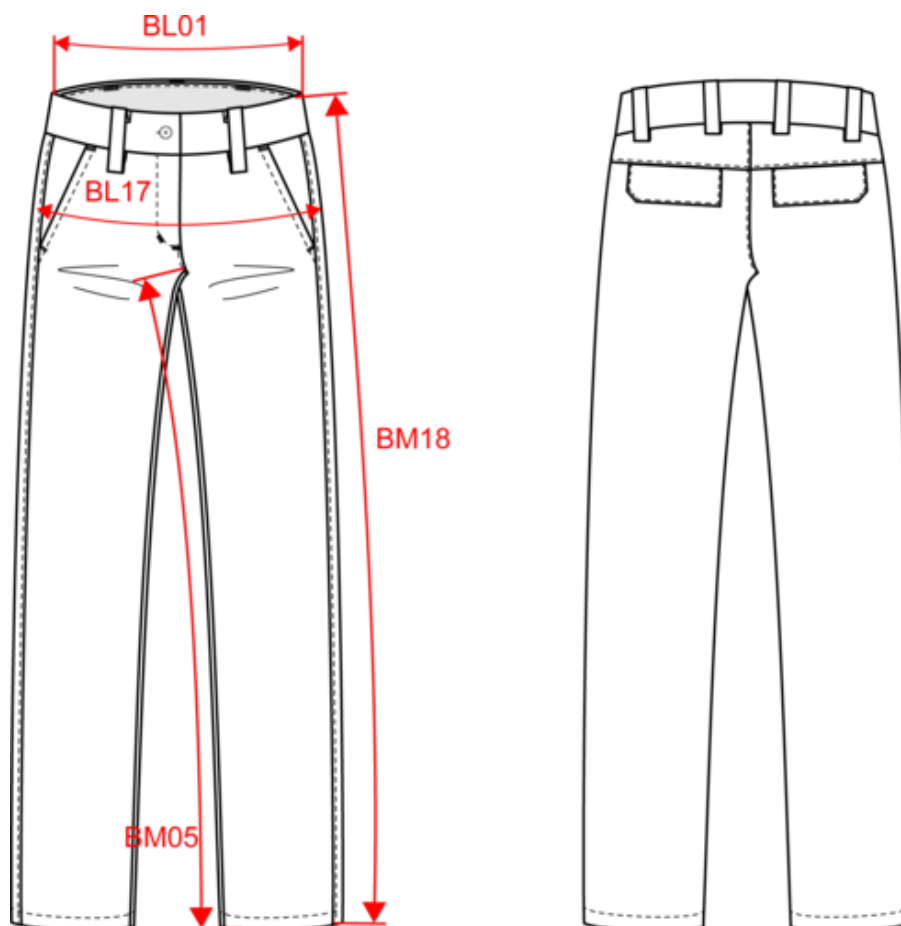
Black

Dark Navy

White



Dimensioni



Measurements in cm	38 IT	40 IT	42 IT	44 IT	46 IT	48 IT	50 IT
BL01 - 1/2 waist width (buttoned up and front band over back band)	35.50	37.50	39.50	41.50	43.50	45.50	47.50
BL17 - 1/2 hip width (measured parallel to waistband)	44.30	46.30	48.30	50.30	52.30	54.30	56.30
BM05 - Inseam length	81.50	81.75	82.00	82.25	82.50	82.75	83.00
BM18 - Side length (waistband included)	103.40	104.10	104.90	105.60	106.40	107.20	107.90

PROACT[®]

PA175

Pantaloni donna

Informazioni colori

Black

RVB : 35,35,37
Pantone C : Black / 425C
Pantone TCX : 19-4004TCX / 18-0201TCX

Dark Navy

RVB : 33,38,45
Pantone C : 426C
Pantone TCX : 19-4007TCX

White

RVB : 236,236,252
Pantone C : White
Pantone TCX : 11-0601TCX

Logistica  1  20

Sizes	Width (cm)	Height (cm)	Length (cm)	Net weight (kg)	Gross weight (kg)	Pieces/Box	Pieces/Bundle
38 IT	40.00	15.00	60.00	5.2	6.2	20	1
40 IT	40.00	15.00	60.00	5.4	6.4	20	1
42 IT	40.00	15.00	60.00	5.6	6.6	20	1
44 IT	40.00	15.00	60.00	5.8	6.8	20	1
46 IT	40.00	15.00	60.00	6	7	20	1
48 IT	40.00	15.00	60.00	6.2	7.2	20	1
50 IT	40.00	15.00	60.00	6.4	7.4	20	1

Taille fabricant	Pays-Bas	Italie	Portugal	Espagne	Royaume-Uni	Allemagne
34 FR	32 NL	38 IT	34 PT	34 ES	8 UK	32 DE
36 FR	34 NL	40 IT	36 PT	36 ES	10 UK	34 DE
38 FR	36 NL	42 IT	38 PT	38 ES	12 UK	36 DE
40 FR	38 NL	44 IT	40 PT	40 ES	14 UK	38 DE
42 FR	40 NL	46 IT	42 PT	42 ES	16 UK	40 DE
44 FR	42 NL	48 IT	44 PT	44 ES	18 UK	42 DE
46 FR	44 NL	50 IT	46 PT	46 ES	20 UK	44 DE