



A proposito di

- In cotone biologico, più ecologico ed etico.
- No label: 100% personalizzabile con il proprio progetto.
- Tessuto morbido e liscio al tatto.

85 % cotone biologico / 15 % poliestere riciclato post-consumer. Cotone pettinato ringspun. Capo con lavaggio agli enzimi. Taglio oversize con spalle cascanti. Felpa garzata a 3 fili LSF (Low Shrinkage Fleece). Mezzaluna sulla schiena. Costine 2 x 1 su collo, fondo capo e fondo manica. Doppia impuntura a cavallo su collo, fondo manica e fondo capo. Nastrino di rinforzo interno a motivo spigato tono su tono sul collo. Il colore Raw Natural si distingue per il suo aspetto grezzo visivamente strutturato, costellato di particelle fini visibili ad occhio nudo.



Taglie



Informazioni complementari

Logistica



Paese d'origine



BD - Bangladesh

Codice doganale



61102099

Colori



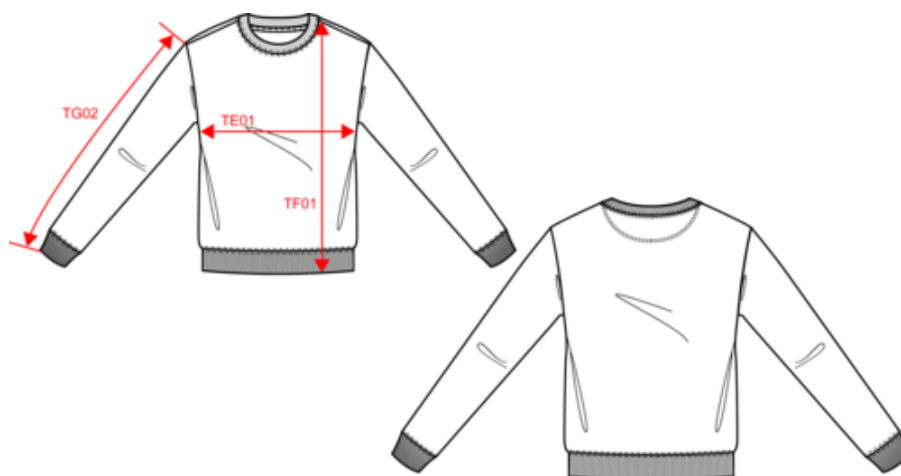
Certificazioni



Made with 85% Organic materials
EGL N°165651 / KARIBAN GROUP







www.oeko-tex.com

Dimensioni



Measurements in cm	XXS	XS	S	M	L	XL	XXL	3XL
TE01 - 1/2 chest width at 1.5cm below armhole	49.00	52.00	55.00	58.00	61.00	64.00	67.00	70.00
TF01 - Total height from HSP	65.00	67.00	69.00	71.00	73.00	75.00	77.00	79.00
TG02 - Long sleeve length	54.00	54.75	55.50	56.25	57.00	57.75	58.50	59.25

Informazioni colori

 Adriatic Blue RVB : 76,130,144 Pantone C : 7475C Pantone TCX : 17-4716TCX	 Aquamarine RVB : 153,173,190 Pantone C : 7542C Pantone TCX : 15-4008TCX	 Black RVB : 35,35,37 Pantone C : Black Pantone TCX : 19-4004TCX	 Brook Green RVB : 181,214,200 Pantone C : 559C Pantone TCX : 12-5808TCX	 Burnt Brick RVB : 160,77,59 Pantone C : 7608C Pantone TCX : 18-1350TCX
 Driftwood RVB : 132,115,97 Pantone C : 7531C Pantone TCX : 17-1118TCX	 Iron Grey RVB : 78,80,82 Pantone C : 446C Pantone TCX : 19-3901TCX	 Ivory RVB : 236,231,218 Pantone C : 7534C Pantone TCX : 11-0701TCX	 Jade Green RVB : 143,167,162 Pantone C : 5575C Pantone TCX : 16-5106TCX	 Navy Blue RVB : 41,45,57 Pantone C : 433C Pantone TCX : 19-4010TCX
 Organic Khaki RVB : 85,87,76 Pantone C : 418C Pantone TCX : 19-0312TCX	 Peacock Green RVB : 0,87,95 Pantone C : 7476C Pantone TCX : 19-4916TCX	 Raw Natural RVB : 215,201,179 Pantone C : Based on 7500C Pantone TCX : Based on 13-10006TCX	 Toffee RVB : 109,89,66 Pantone C : 7532C Pantone TCX : 18-0928 TCX	 White RVB : 236,236,252 Pantone C : White Pantone TCX : 11-0601TCX

Logistica



Sizes	Width (cm)	Height (cm)	Length (cm)	Net weight (kg)	Gross weight (kg)	Pieces/Box	Pieces/Bundle
XXS	40.00	32.00	60.00	8.6	7.3	20	5
XS	40.00	32.00	60.00	9.1	7.8	20	5
S	40.00	32.00	60.00	9.7	8.4	20	5
M	40.00	32.00	60.00	10.2	8.9	20	5
L	40.00	35.00	60.00	10.7	9.1	20	5
XL	40.00	35.00	60.00	11.4	9.8	20	5
XXL	40.00	39.00	60.00	11.8	10.1	20	5
3XL	40.00	39.00	60.00	12.7	11	20	5