

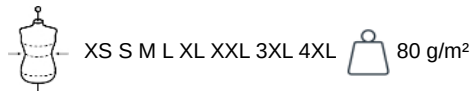
# PROACT.<sup>®</sup>

PA250

## Giacca unisex adulti antipioggia

- Impermeabile 1.500 mm.
- Cuciture impermeabili termosaldate.
- Cappuccio integrato.

100% poliestere opaco 210T rivestito in PU. Tessuto impermeabile 1500 mm. Cappuccio e cuciture termosaldate sulle spalle impermeabili. 2 tasche laterali con cerniera e tiretto. 2 tasche interne. Chiusura frontale con cerniera a contrasto. Cappuccio regolabile con stopper al collo e pattina velcro a strappo. Fondo manica elasticizzato. Etichetta del marchio staccabile.



### Certificazioni

### Informazioni complementari

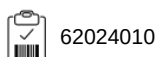
Logistica



Paese d'origine



Codice doganale



### Disponibile anche nella versione



PA251

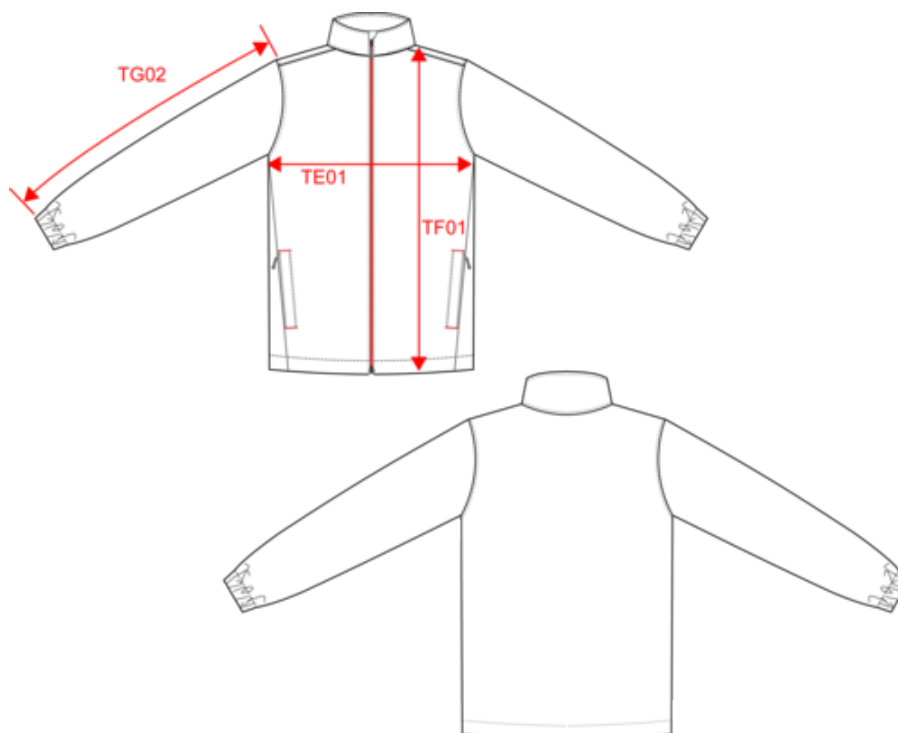


# PROACT.®

PA250

## Giacca unisex adulti antipioggia

### Dimensioni



Measurements in cm	XS	S	M	L	XL	XXL	3XL	4XL
TE01 - 1/2 chest width at 1.5cm below armhole	55.00	58.00	61.00	64.00	67.00	70.00	73.00	76.00
TF01 - Total height from HSP	75.50	77.50	79.50	81.50	83.50	85.50	87.50	89.50
TG02 - Long sleeve length	61.00	62.50	64.00	65.50	67.00	68.50	70.00	71.00

# PROACT<sup>®</sup>

PA250

## Giacca unisex adulti antipioggia

### Informazioni colori



**Black**

RVB : 35,35,37  
Pantone C : Black / 425C  
Pantone TCX : 19-4004TCX / 18-0201TCX



**Dark Royal Blue**

RVB : 33,64,121  
Pantone C : 654C  
Pantone TCX : 19-3964TCX



**Navy**

RVB : 41,46,56  
Pantone C : 433C  
Pantone TCX : 19-4012TCX



**Sporty Red**

RVB : 181,18,46  
Pantone C : 1805C / -  
Pantone TCX : 19-1761TCX / -

Logistica



5



50

Sizes	Width (cm)	Height (cm)	Length (cm)	Net weight (kg)	Gross weight (kg)	Pieces/Box	Pieces/Bundle
XS	40.00	32.00	60.00	8.8	10.2	50	5
S	40.00	32.00	60.00	8.8	10.2	50	5
M	40.00	32.00	60.00	8.8	10.2	50	5
L	40.00	32.00	60.00	11.1	12.5	50	5
XL	40.00	32.00	60.00	11.1	12.5	50	5
XXL	40.00	32.00	60.00	11.1	12.5	50	5
3XL	40.00	32.00	60.00	13.4	14.8	50	5
4XL	40.00	32.00	60.00	13.4	14.8	50	5