



85% cotone biologico / 15% poliestere riciclato post-consumo. Cotone pettinato. Lavaggio agli enzimi. Taglio oversize con spalle spioventi. Felpa garzata a 3 fili LSF (Low Shrinkage Fleece: felpa preristretta). Mezzaluna sul retro. Collo, fondo manica e fondo capo a costine 2 x 1. Nastro di rinforzo con motivo spigato tono su tono come finitura all'interno del collo.

 300 g/m<sup>2</sup> 

### Taglie



4/6 ans 6/8 ans 8/10 ans 10/12 ans 12/14 ans

### Informazioni complementari

#### Logistica

 5

#### Paese d'origine

 20



BD - Bangladesh

#### Codice doganale



61102099

### Colori



Black



Driftwood



Ivory



Navy Blue

### Certificazioni



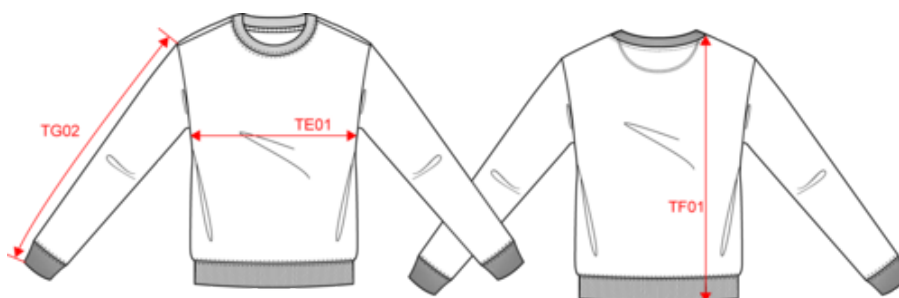
Made with 85% Organic materials  
EGL N°165651 / KARIBAN GROUP



STANDARD  
100  
CO 100717  
IFTH  
www.oeko-tex.com



Dimensioni



Measurements in cm	4/6 ans	6/8 ans	8/10 ans	10/12 ans	12/14 ans
TE01 - 1/2 chest width at 1.5cm below armhole	39.70	41.40	44.00	47.50	51.00
TF01 - Total height from HSP	44.90	49.70	54.50	59.30	64.10
TG02 - Long sleeve length	35.40	39.60	44.00	48.60	53.20

Informazioni colori



**Black**  
 RVB : 35,35,37  
 Pantone C : Black  
 Pantone TCX : 19-4004TCX



**Driftwood**  
 RVB : 132,115,97  
 Pantone C : 7531C  
 Pantone TCX : 17-1118TCX



**Ivory**  
 RVB : 236,231,218  
 Pantone C : 7534C  
 Pantone TCX : 11-0701TCX



**Navy Blue**  
 RVB : 41,45,57  
 Pantone C : 433C  
 Pantone TCX : 19-4010TCX

Logistica



5



20

Sizes	Width (cm)	Height (cm)	Length (cm)	Net weight (kg)	Gross weight (kg)	Pieces/Box	Pieces/Bundle
4/6 ans	40.00	16.00	60.00	4.2	5.4	20	5
6/8 ans	40.00	16.00	60.00	4.75	5.95	20	5
8/10 ans	40.00	16.00	60.00	5.35	6.55	20	5
10/12 ans	40.00	22.00	60.00	6.2	7.5	20	5
12/14 ans	40.00	22.00	60.00	7.05	8.35	20	5