

# ARTWORK APPROVAL FORM

## ORDER DETAILS

ORDER NUMBER: X  
 ITEM CODE: NOPCC5  
 QUANTITY: X  
 ELASTIC BAND: NONE  
 X: X

## OUTER COVER (A1)

TECHNIQUE: OFFSET  
 COLOUR: X  
 SIZE: X  
 MATERIAL: COFFEE PAPER

## INNER COVER (A2)

TECHNIQUE: X  
 COLOUR: X  
 SIZE: AS ARTWORK  
 X: X  
 X: X

## SHEETS (B1/B2)

TECHNIQUE: X  
 COLOUR: X  
 SIZE: AS ARTWORK  
 PAPER TYPE: ST. LINED  
 ST. SQUARED  
 CUSTOM DESIGN

X  
 X: X  
 X: X  
 X: X  
 X: X  
 X: X



SCALE 1:4

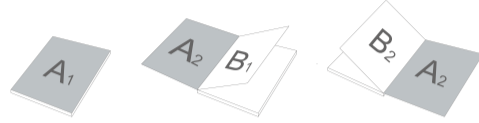
### GENERAL COMMENTS:

DUE TO THE NATURE OF FULL COLOUR PRINTING THE OUTCOME OF THE FINAL COLOUR RESULT CAN BE SLIGHTLY DIFFERENT IN A REAL SAMPLE.  
 WATERMARK EFFECT MIGHT BE DIFFERENT FROM EXPECTATION.THE FINAL EFFECT CAN BE TOO DARK OR TOO BRIGHT.  
 WE RESERVE THE RIGHT TO DELIVER AND INVOICE +/- 10% OF THE ORDER QUANTITY

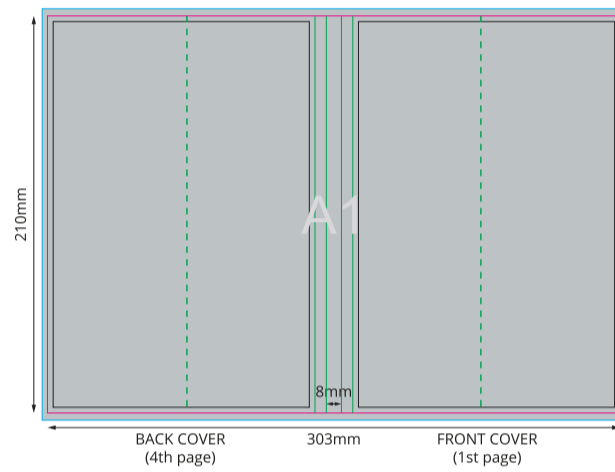
### ATTENTION:

ALL IMPRINTS ON UNCOATED PAPER CAN BE A LITTLE SHINY.  
 DUE THE SURFACE OF ECO ITEM (COFFE PAPER) THE COLOUR RESULT MIGHT BE DIFFER FROM EXPECTATION, ESPECIALLY FOR VERY BRIGHT COLOURS.  
 DUE THE MATERIAL AND PRODUCTION PROCESS ECO PRODUCTS DON'T INCLUDE ANY FINISHING.  
 DUE THE SURFACE MATERIAL OF THIS ITEM WHEN A FULL EDGE TO EDGE PRINT IS REQUIRED THERE IS A RISK OF SOME INK BEING REMOVED DURING THE ASSEMBLY OF THE OUTER NOTEBOOK COVERS. IT IS RECOMMENDED TO KEEP PRINTING INSIDE THE INDICATED SAFE PRINT AREA.  
 THE FINAL RESULT OF GRADIENTS COLOURS MIGHT BE DIFFER FROM EXPECTATION.

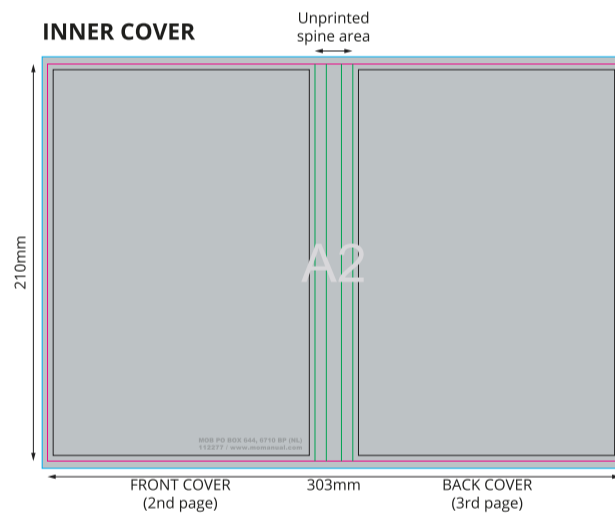
### SKETCH OF COMPONENT PLACEMENT



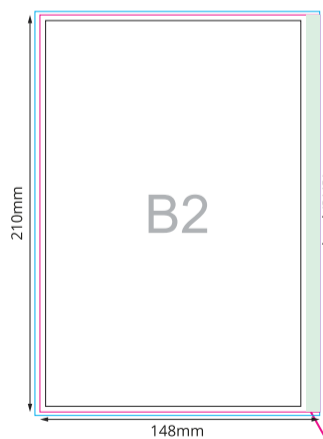
### OUTER COVER



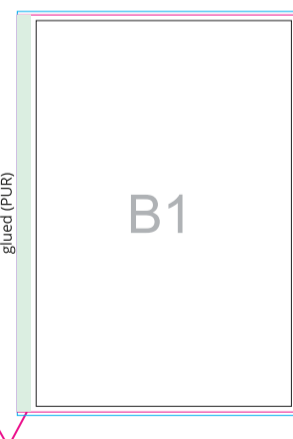
### INNER COVER



### PUR NOTEPAD - BACK



### PUR NOTEPAD - FRONT



80 SHEETS

### Key:

- Finished component size
- Bleed area. In case of bleed imprint, please extend it until blue line
- Safe print area. Keep all important text and graphics within this area
- Solid Board
- Axis of the Crease
- Visual spine edge

yourChoice

A1

A2

MOB PO BOX 644, 6710 BP (NL)  
112277 / [www.momanual.com](http://www.momanual.com)



B1

B2