

PROACT.®

REFERENCE : PA483

SIZES : XS_S_M_L_XL_XXL

COMPOSITION :

Main fabric : Polyester Cool Plus / Polyester interlock 50/50 -
145 Fabric submit at test Drying Rate of Textiles at their
Absorbent Capacity: Air Flow method

WEIGHT :

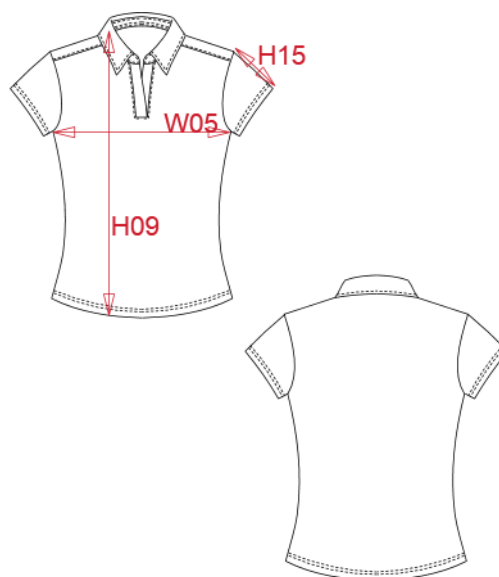
Main fabric : 145 gsm

TECHNICAL DETAIL :

Moisture control fabric

ARTICLE WEIGHT :

100gr/pc



DESCRIPTION	
Français : Polo femme respirant à séchage rapide	
English : Ladies performance polo	
Nederlands : Ademende en sneldrogende damespolo	
Deutsch : Schnell-Trockendes-Atmungsaktives Polohemd für Damen	
Español : Polo transpirable de secado rapido para mujer	
Italiano : Polo donna asciugatura rapida	
Português : Polo de senhora de desporto	

COLORS	PANTONE SERIGRAPHIE
White	White
Black	Black
Red	200C
Navy	433C
Fine grey	877C
Orange	1585C
Lime	367C
Aqua blue	7690C
True Yellow	116C
Ice mint	573C
Grey melange	Based on 402C

MEASUREMENT							
Description	XS	S	M	L	XL	XXL	
H09 (L) Hauteur totale devant / Front total height	61	63	65	67	69	71	
W05 (L) 1/2 largeur poitrine à 1.5cm de l'emmanchure / 1/2 chest width at 1.5cm below armhole	41	44	47	50	53	56	
H15C (L) Longueur manche courte / Short sleeve length	12	12,75	13,50	14,25	15	15,75	

CARE LABEL				

PACKING	
Box	25 pcs / box XS => L:60cm W:40cm H:13cm GW:4kg NW:2.8kg S => L:60cm W:40cm H:13cm GW:4.2kg NW:3kg M => L:60cm W:40cm H:13cm GW:4.5kg NW:3.3kg L => L:60cm W:40cm H:13cm GW:4.6kg NW:3.4kg XL => L:60cm W:40cm H:13cm GW:5kg NW:3.8kg XXL => L:60cm W:40cm H:13cm GW:5.2kg NW:4kg