

POLO BASIC M/C



DESCRIZIONE / Description

POLO manica corta Polo short sleeve

COMPOSIZIONE / Composition

70% Cotone
30% Poliestere

70% Cotton
30% Polyester

TAGLIE / Sizes

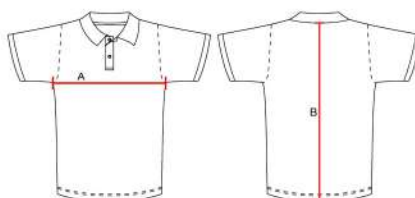
YS - 3XS - 2XS - XS - S - M - L - XL - 2XL - 3XL

FITTING STANDARD



TAGLIE SIZES	YS	3XS	2XS	XS	S	M	L	XL	2XL	3XL
A - SEMICIRCONFERENZA TORACE A - HALF-CHEST MEASUREMENT	34 cm	36 cm	40 cm	44 cm	48 cm	53 cm	57 cm	60 cm	62 cm	65 cm
B - LUNGHEZZA TOTALE B - BACK LENGHT	44 cm	47 cm	52 cm	56 cm	62 cm	68 cm	72 cm	75 cm	78 cm	81 cm

SCHEMA / Scheme



COLORI / Colors



Light Royal
LIGHT ROYAL



Blu
BLUE



Granata
BURGUNDY



Rosso
RED



Arancio
ORANGE



Giallo
YELLOW



Verde
GREEN



Nero
BLACK



Grigio
GREY



Bianco
WHITE

PERSONALIZZAZIONI / Customizations



RICAMO
embroidery



TRANSFER
transfer



SERIGRAFIA
serigraphy