

## GIUBBOTTO ULYSSE



### DESCRIZIONE / Description

Giubbotto da passeggio imbottito /  
Padded relax jacket

### COMPOSIZIONE / Composition

SHELL : 100% Nylon / SHELL: 100% Nylon  
LINING: 100% Poliestere / LINING: 100% Polyester  
PADDING: 100% Poliestere / LINING: 100% Polyester

### TAGLIE / Sizes

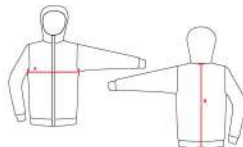
YS - 3XS - 2XS - XS - S - M - L - XL - 2XL - 3XL

FITTING **STANDARD**



TAGLIE SIZES	YS	3XS	2XS	XS	S	M	L	XL	2XL	3XL
A - SEMICIRCONFERENZA TORACE A - HALF-CHEST MEASUREMENT	39 cm	41 cm	45 cm	50 cm	54 cm	56 cm	59 cm	62 cm	64 cm	66 cm
B - LUNGHEZZA TOTALE GIACCA B - BACK LENGHT JACKET	41 cm	47 cm	50 cm	55 cm	59 cm	65 cm	68 cm	71 cm	73 cm	75 cm

### SCHEMA / Scheme



### COLORI / Colors



Blu-Royal  
NAVY-ROYAL



Blu-Rosso  
NAVY-RED



Nero-Arancio Fl.  
BLACK-ORANGE FL.



Blu-Giallo  
NAVY-YELLOW



Blu-Giallo Fl.  
NAVY-YELLOW FL.

### PERSONALIZZAZIONI / Customizations



RICAMO  
embroidery



TRANSFER  
transfer



SERIGRAFIA  
serigraphy