

MK2112

EMBROIDERED KEY TAG

Material: Cotton base + polyester thread
Item size: 13 x 3 cm
Technique: Embroidery
Attention: Stitches connection will appear between elements that are within 2 mm distance of each other.

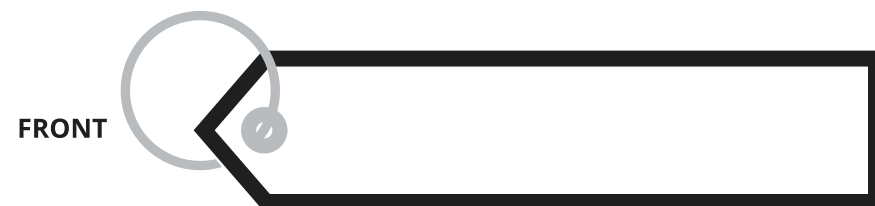
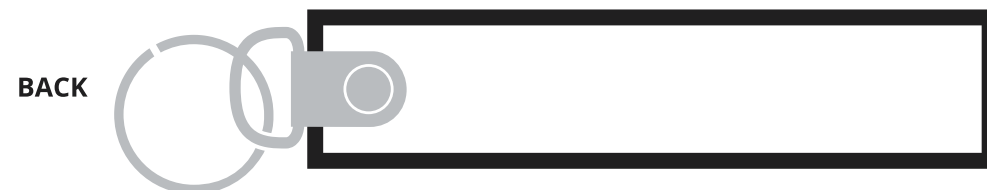
SCALE 1:1

FABRIC - STANDARD COLOURS



Over 50 standard colours.
We match your request with the closest colour available.

SCALE 1:1



MT2002

EMBROIDERED LUGGAGE TAG

Embroidered luggage tag in shield or round shape. The front of this item can be personalized with an embroidered or sublimated surface, the backside is white.

- With PVC strap
- With cut off hole on the item for attaching PVC strap
- With merrow border
- Back side with white and plain design (WITHOUT paper card and transparent PVC window, unless customer pays for extra)

** The shape can be customized, but it is suggested to ask the sales team to check the possibility and price with our team in advance.

Sublimation or embroidery (up to 70% of the surface) is included in the price.

Size dia: 80 mm

SCALE 1:1

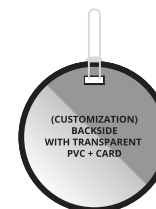
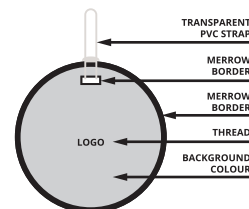


FRONT
ROUND SHAPE



WHITE BACK
ROUND SHAPE

CUSTOMIZATION



STANDARD CARD FOR BACKSIDE
(ON CUSTOMER REQUEST)

Name:	_____
Address:	_____

Tel:	_____
Email:	_____