

MK2001

CUSTOM SHAPE KEYCHAIN

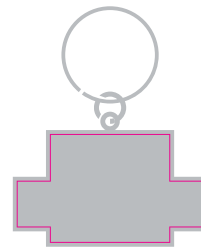
Soft enamel is the most popular and has a recessed surface (2 colours included).

Material: Iron (2 mm thickness)
with nickel plating and gritty backside.

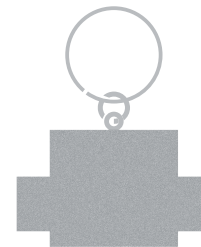
Customization: change from M1 to M2/M3

Size = (length + width) / 2

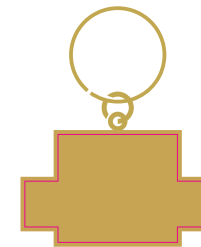
SCALE 1:1



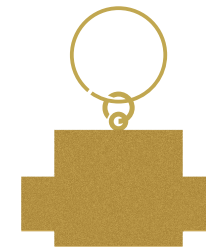
FRONT
NICKEL PLATING



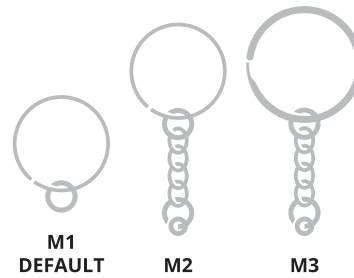
BACK
GRITTY FINISHING
NICKEL PLATING



FRONT
BRASS PLATING



BACK
GRITTY FINISHING
BRASS PLATING



M1
DEFAULT

M2

M3



MT2002

EMBROIDERED LUGGAGE TAG

Embroidered luggage tag in shield or round shape. The front of this item can be personalized with an embroidered or sublimated surface, the backside is white.

- With PVC strap
- With cut off hole on the item for attaching PVC strap
- With merrow border
- Back side with white and plain design (WITHOUT paper card and transparent PVC window, unless customer pays for extra)

** The shape can be customized, but it is suggested to ask the sales team to check the possibility and price with our team in advance.

Sublimation or embroidery (up to 70% of the surface) is included in the price.

Size dia: 80 mm

SCALE 1:1

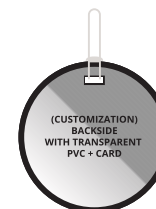
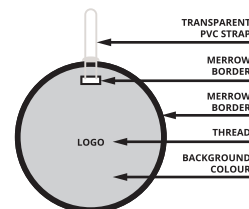


FRONT
ROUND SHAPE



WHITE BACK
ROUND SHAPE

CUSTOMIZATION



STANDARD CARD FOR BACKSIDE
(ON CUSTOMER REQUEST)

Name:	_____
Address:	_____

Tel:	_____
Email:	_____