

SCALE 1:4

**GENERAL COMMENTS:**

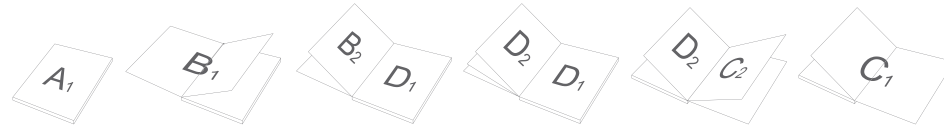
DUE TO THE NATURE OF FULL COLOUR PRINTING THE OUTCOME OF THE FINAL COLOUR RESULT CAN BE SLIGHTLY DIFFERENT IN A REAL SAMPLE.

WATERMARK EFFECT MIGHT BE DIFFERENT FROM EXPECTATION.THE FINAL EFFECT CAN BE TOO DARK OR TOO BRIGHT.

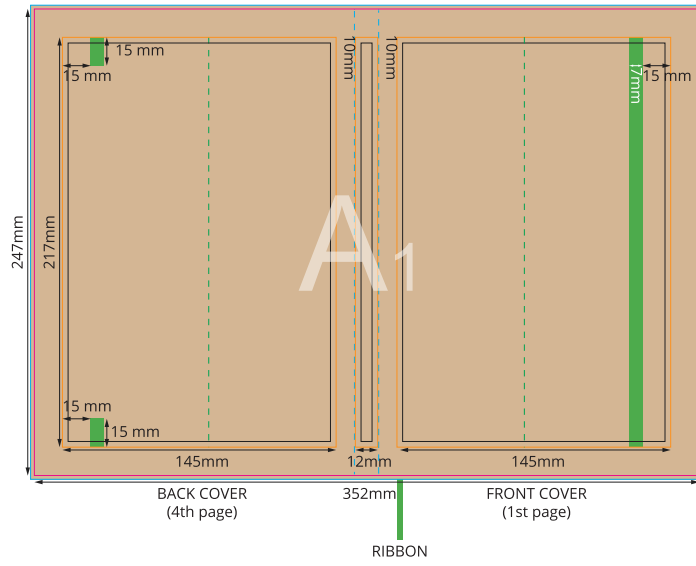
DUE THE SURFACE OF ECO ITEM (BROWN PAPER) THE COLOUR RESULT MIGHT BE DIFFER FROM EXPECTATION, ESPECIALLY FOR VERY BRIGHT COLOURS.

**ATTENTION:**

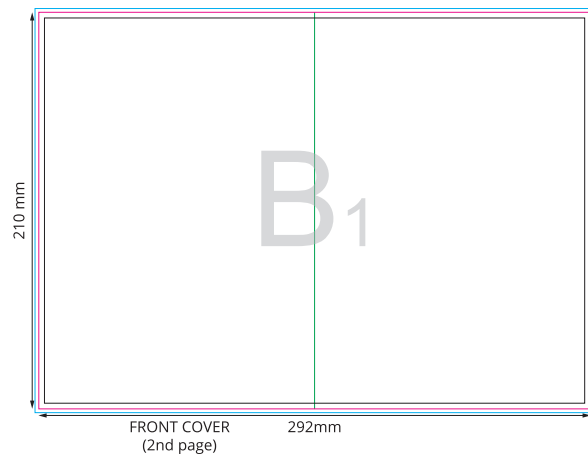
**SKETCH OF COMPONENT PLACEMENT**



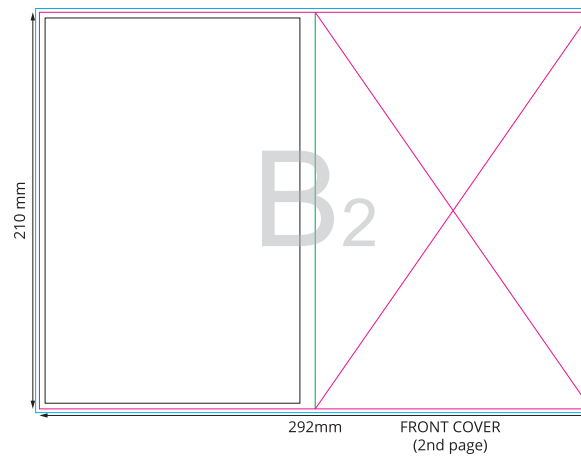
**OUTER COVER**



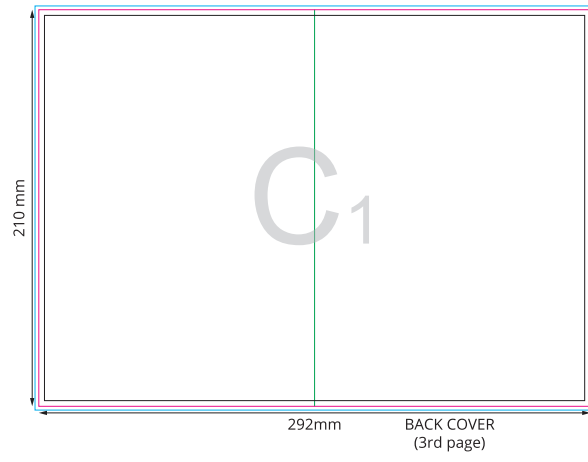
**TOP ENDSHEET - FRONT**



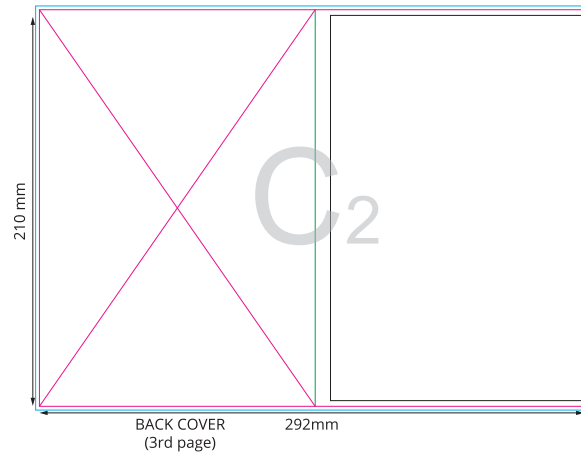
**TOP ENDSHEET - BACK**



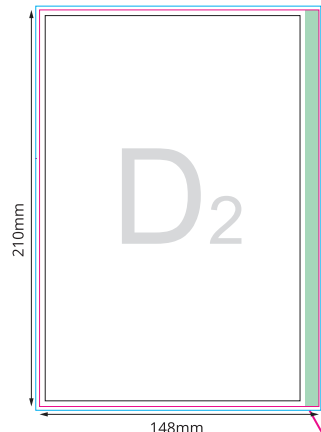
**BOTTOM ENDSHEET - FRONT**



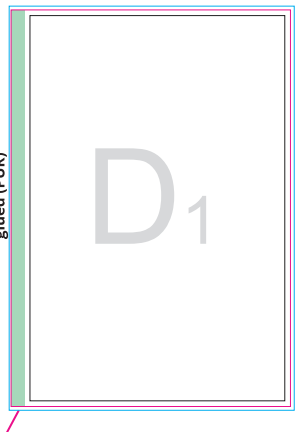
**BOTTOM ENDSHEET - BACK**



**PUR NOTEPAD - BACK**



**PUR NOTEPAD - FRONT**



**80 SHEETS**

REMARKS:  
The edge is glued to the inner cover spine, from the binding edge.  
The edge is glued to the inner cover spine, from the binding edge.

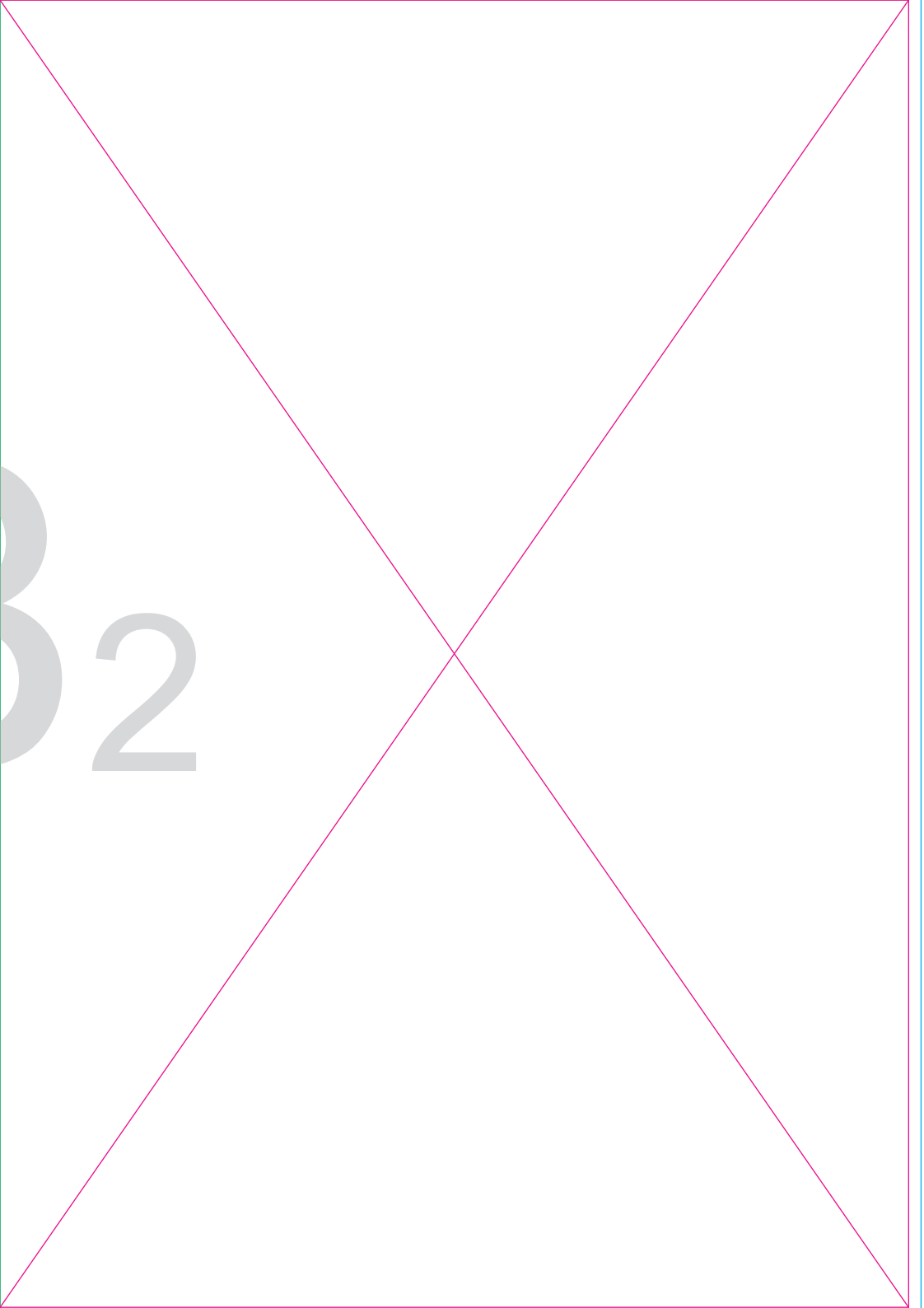
- Key:
- Finished component size
  - Bleed area. In case of bleed imprint, please extend it until blue line
  - Safe print area. Keep all important text and graphics within this area
  - Solid Board
  - Axis of the Crease
  - Visual spine edge

**yourChoice**

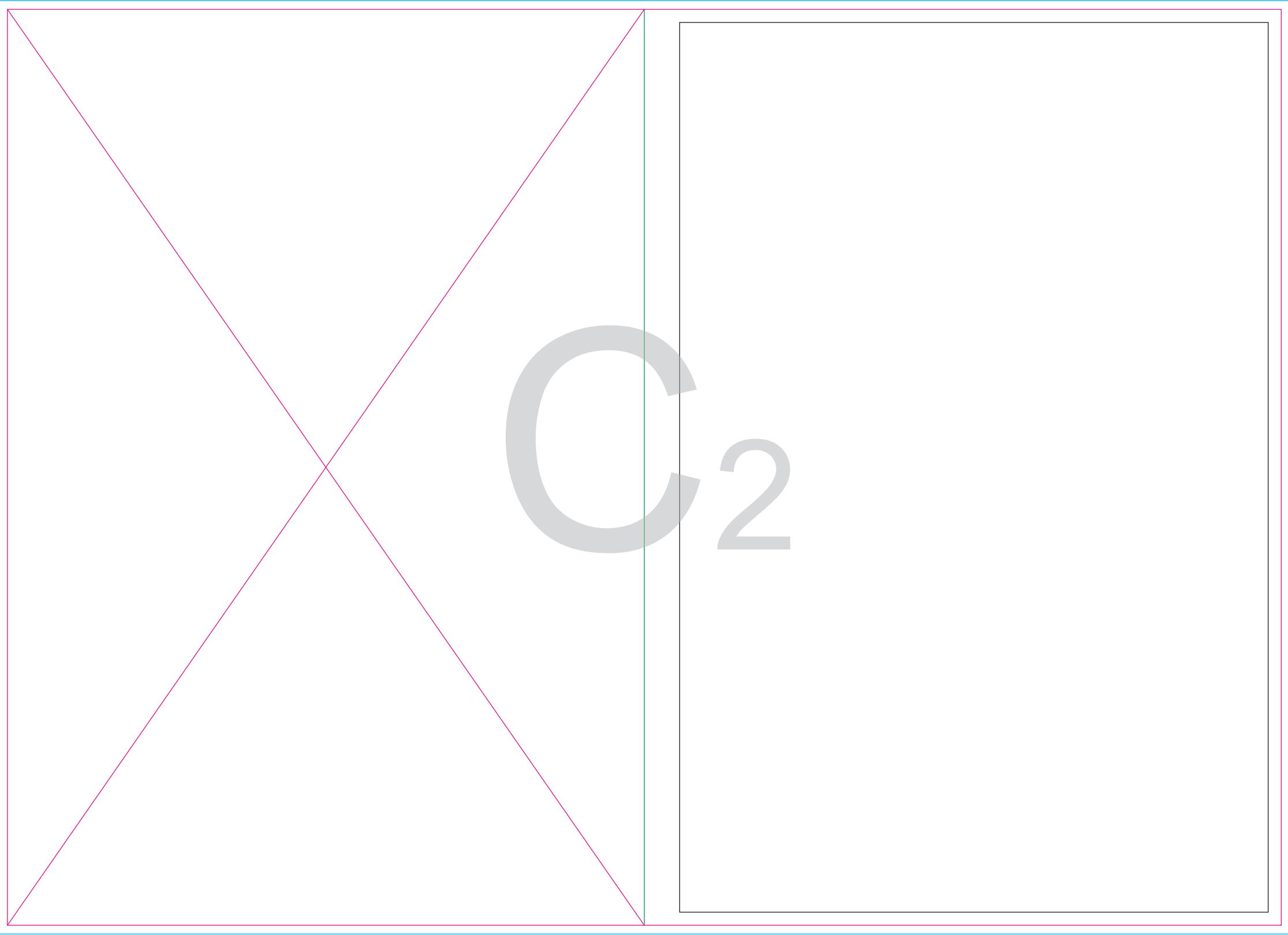
A<sub>1</sub>

B<sub>1</sub>

B<sub>2</sub>



C<sub>1</sub>



The image shows a large rectangular frame with a light blue border. Inside this frame, a pink border outlines a rectangle that is crossed by two diagonal lines from opposite corners. To the right of this pink-outlined area, a vertical green line separates it from a white rectangular area with a black border. The text 'C2' is centered in the white area.

C<sub>2</sub>

D 1

D 2