

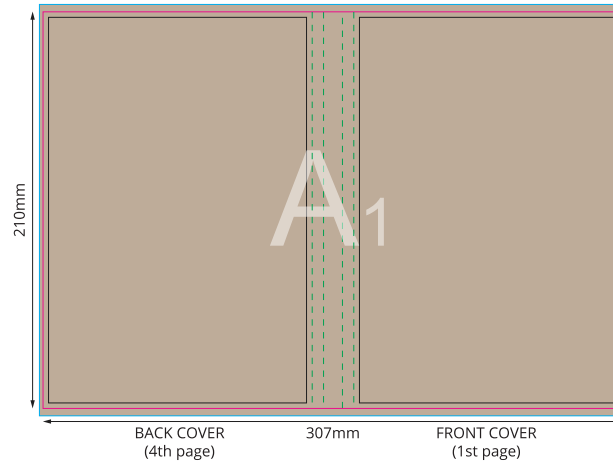
SCALE 1:4

**GENERAL COMMENTS:**

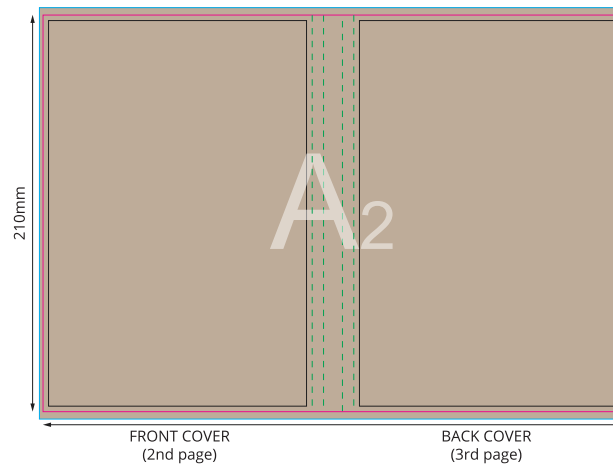
DUE TO THE NATURE OF FULL COLOUR PRINTING THE OUTCOME OF THE FINAL COLOUR RESULT CAN BE SLIGHTLY DIFFERENT IN A REAL SAMPLE.  
WATERMARK EFFECT MIGHT BE DIFFERENT FROM EXPECTATION.THE FINAL EFFECT CAN BE TOO DARK OR TOO BRIGHT.

**ATTENTION:**

**OUTER COVER**

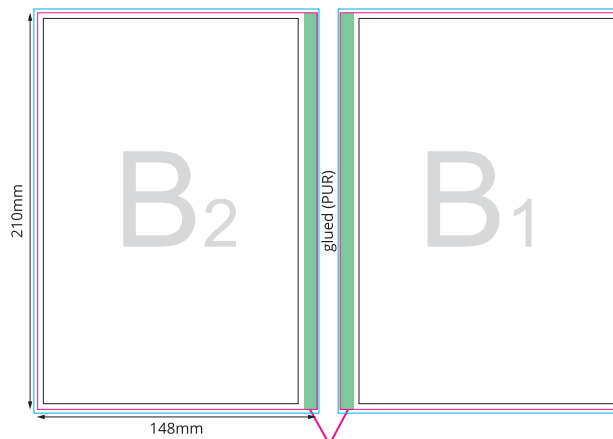


**INNER COVER**



**PUR NOTEPAD - BACK**

**PUR NOTEPAD - FRONT**

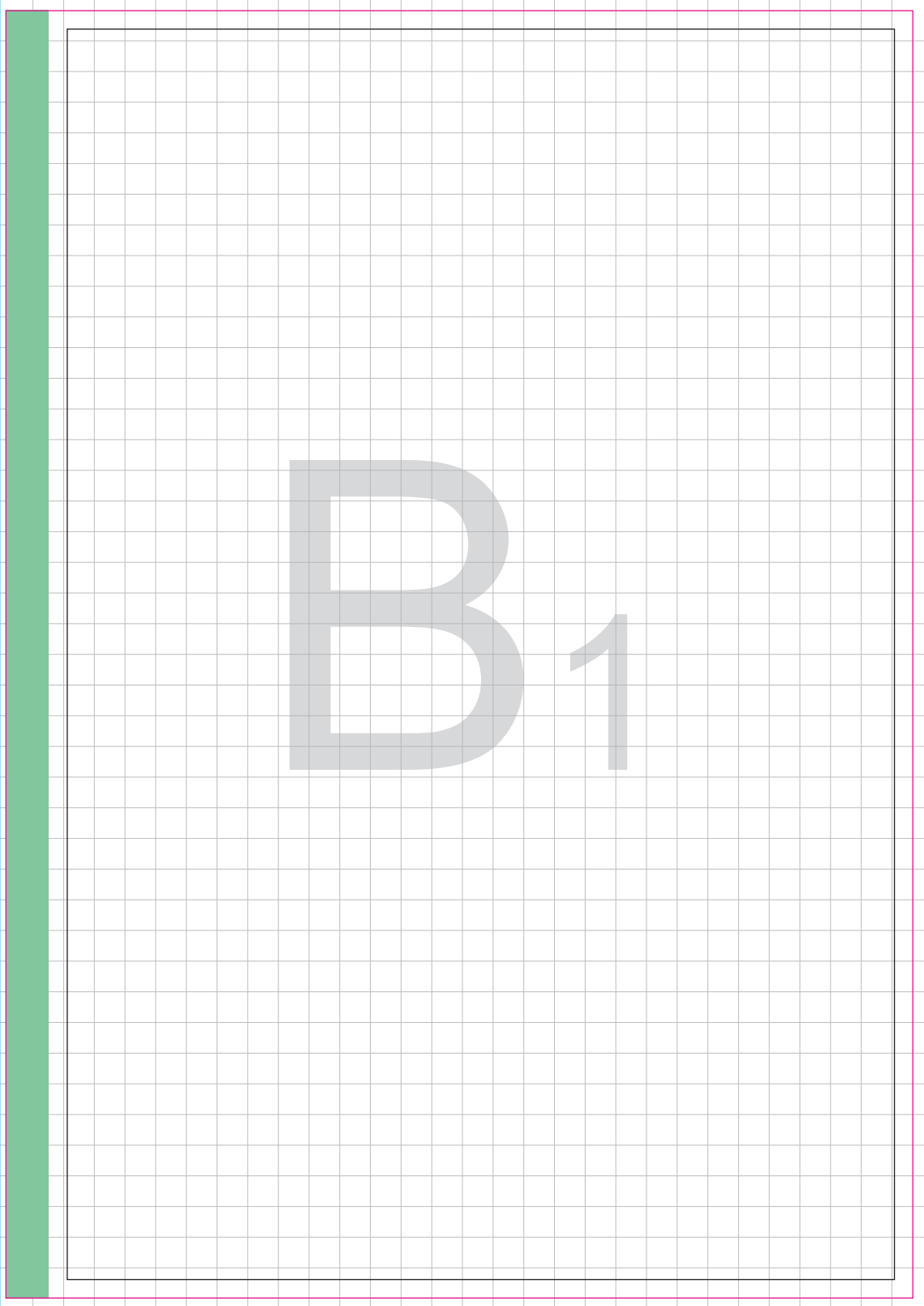


**Important:**  
Front page is glued to the inner cover spine, then from the binding margin.  
Last page is glued to the inner cover spine, then from the binding margin.

- Key:
- Finished component size
  - Bleed area. In case of bleed imprint, please extend it until blue line
  - Safe print area. Keep all important text and graphics within this area
  - Solid Board
  - Axis of the Crease
  - Visual spine edge

A 1

A<sub>2</sub>



B 1

B<sub>2</sub>