

SCALE 1:2

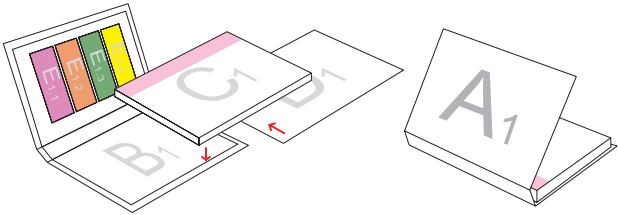
GENERAL COMMENTS:

THE FINAL OUTCOME OF THE COLOURS WILL BE AFFECTED DEPENDING OF THE LAMINATION TYPE.

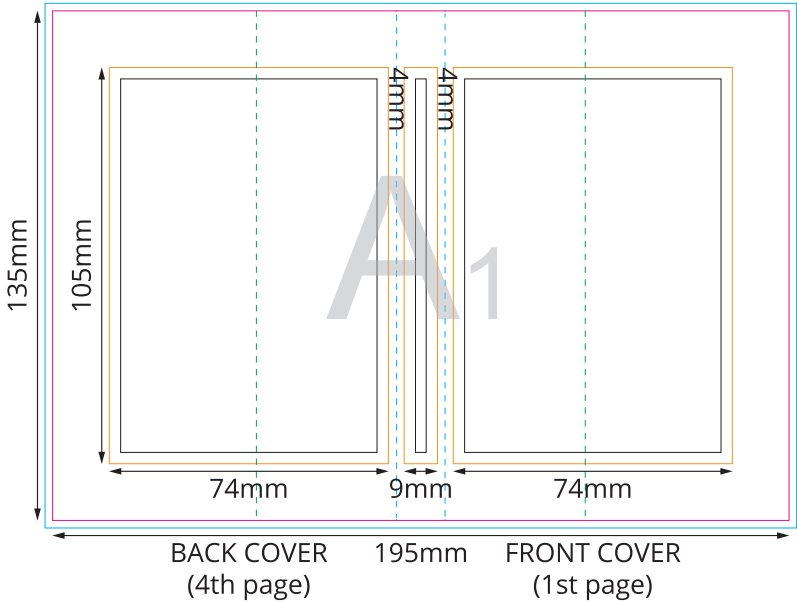
DUE TO THE NATURE OF FULL COLOUR PRINTING THE OUTCOME OF THE FINAL COLOUR RESULT CAN BE SLIGHTLY DIFFERENT IN A REAL SAMPLE.

WATERMARK EFFECT MIGHT BE DIFFERENT FROM EXPECTATION.THE FINAL EFFECT CAN BE TOO DARK OR TOO BRIGHT.

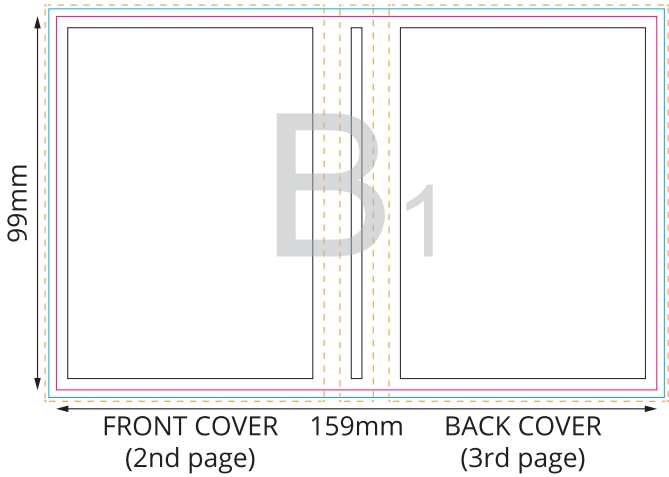
ATTENTION:



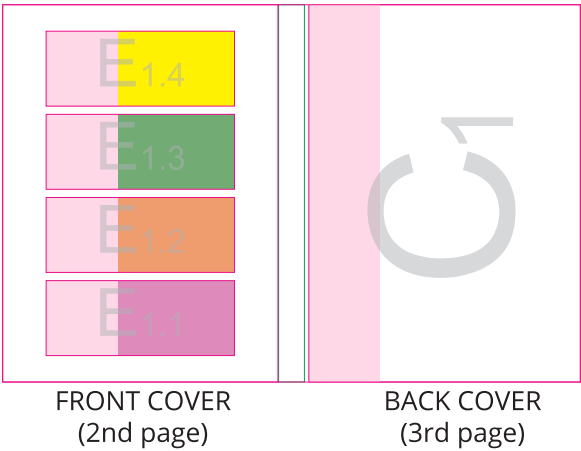
OUTER COVER



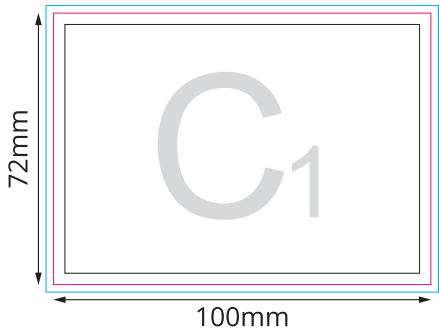
INNER COVER



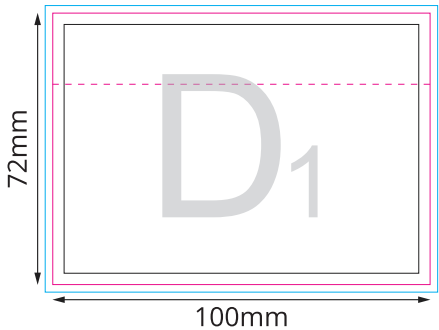
SKETCH OF COMPONENT PLACEMENT



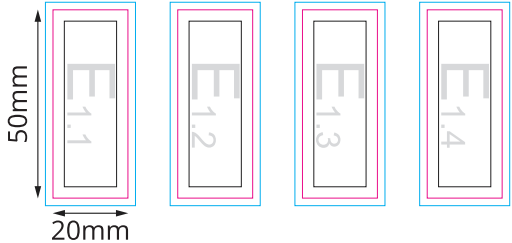
STICKY NOTES



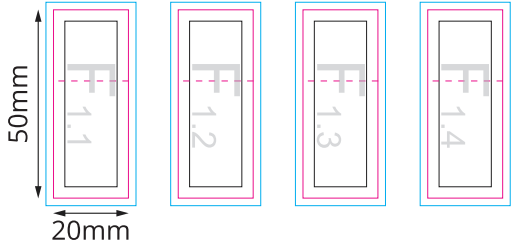
BOTTOM SHEET



PAPER MARKS



BOTTOM SHEETS



Key:

— Finished component size

— Bleed area. In case of bleed imprint, please extend it until blue line

— Safe print area. Keep all important text and graphics within this area

— Solid Board

— Edge of Solid Board

— Visual Spine Edge

— Axis of the Product

A<sub>1</sub>

B

1



C<sub>1</sub>

A diagram showing a rectangular frame with a dashed horizontal line. The frame is composed of three concentric rectangles: an outermost light blue border, a middle magenta border, and an innermost black border. A dashed magenta horizontal line spans the width of the frame, passing through the center. The text "D1" is centered within the frame, with the "D" being significantly larger than the "1".

D<sub>1</sub>



E  
1.2

E  
1.  
3



1.4

