

SCALE 1:2

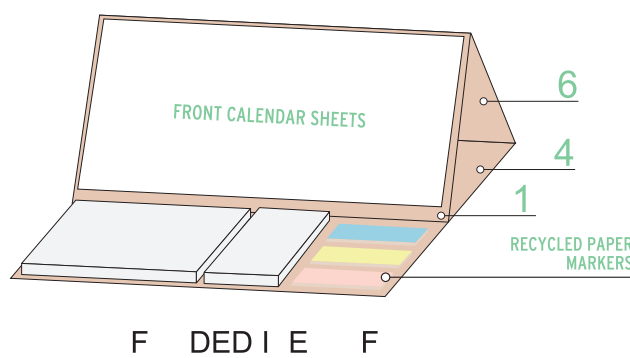
GENERAL COMMENTS:

THE FINAL OUTCOME OF THE COLOURS WILL BE AFFECTED DEPENDING OF THE LAMINATION TYPE.
 DUE TO THE NATURE OF FULL COLOUR PRINTING THE OUTCOME OF THE FINAL COLOUR RESULT CAN BE SLIGHTLY DIFFERENT IN A REAL SAMPLE.
 WATERMARK EFFECT MIGHT BE DIFFERENT FROM EXPECTATION.THE FINAL EFFECT CAN BE TOO DARK OR TOO BRIGHT.

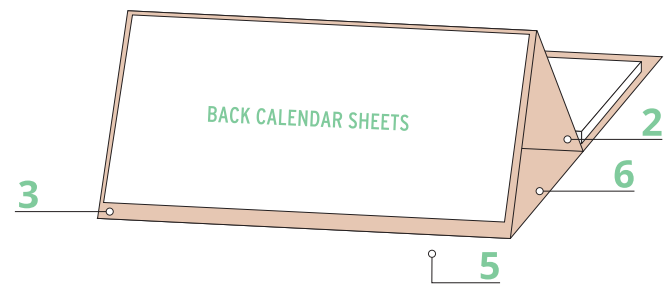
ATTENTION:

ALL IMPRINTS ON UNCOATED PAPER CAN BE A LITTLE SHINY.
 DUE THE SURFACE OF ECO ITEM (BROWN PAPER) THE COLOUR RESULT MIGHT BE DIFFER FROM EXPECTATION, ESPECIALLY FOR VERY BRIGHT COLOURS.
 DUE THE MATERIAL AND PRODUCTION PROCESS ECO PRODUCTS DON'T INCLUDE ANY FINISHING.
 DUE THE CRAFT MATERIAL OF ITEM, WHILE COVER PART IS BEING FOLD, THERE IS RISK OF WIPING PRINT OUT ON THE COVER EDGES. IT IS SUGGESTED TO KEEP PRINTING INSIDE SAFE PRINT AREA

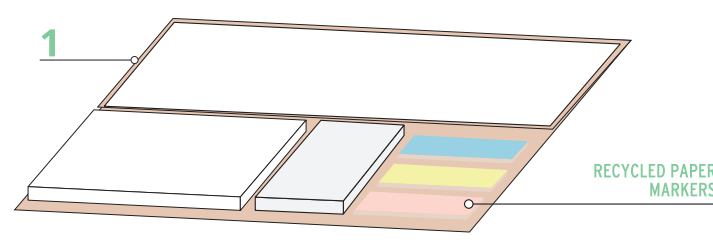
SKETCH OF COMPONENT PLACEMENT



F D E D I E F



FOLDED ITEM - BACK

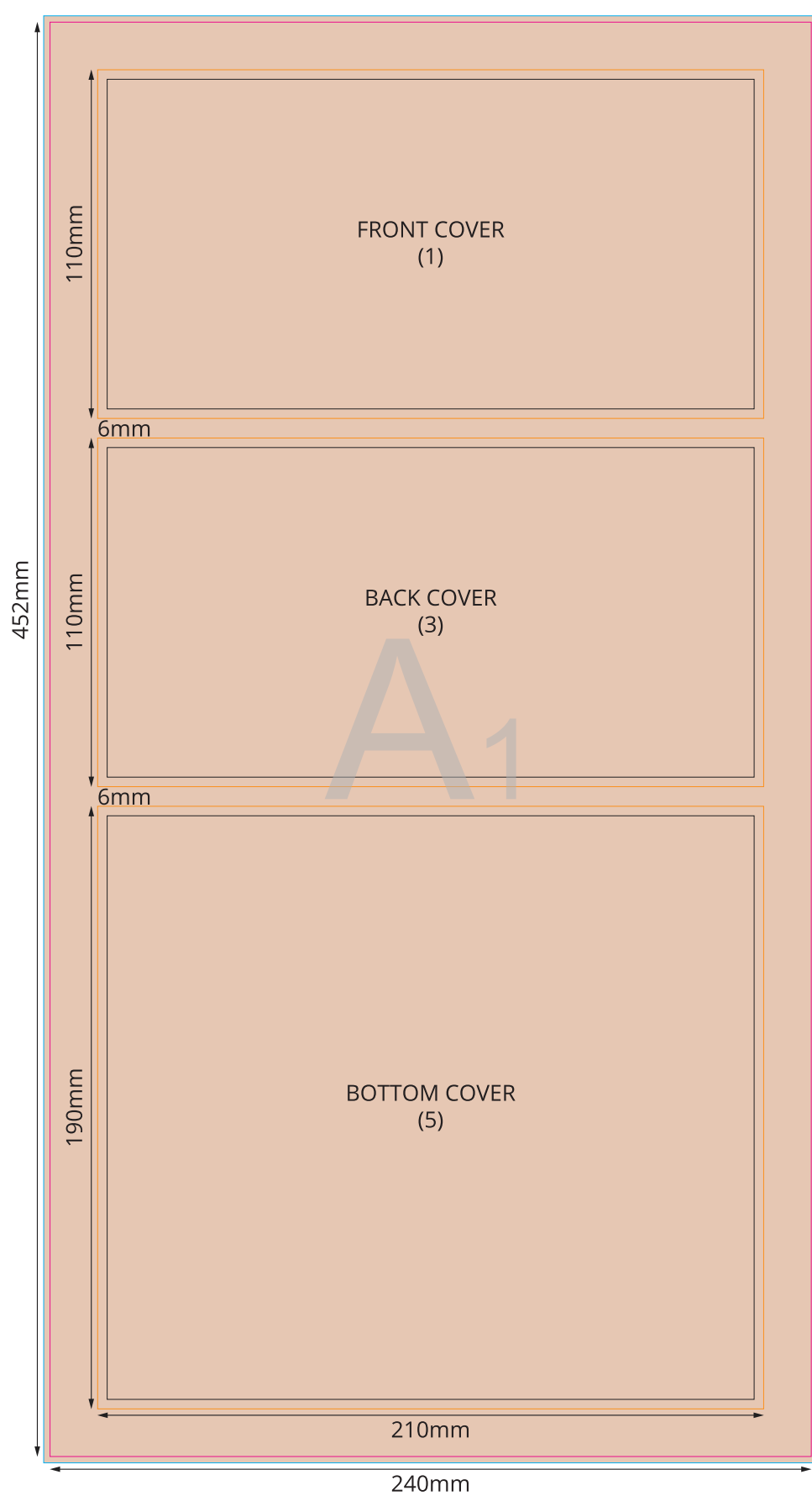


FOLDED ITEM

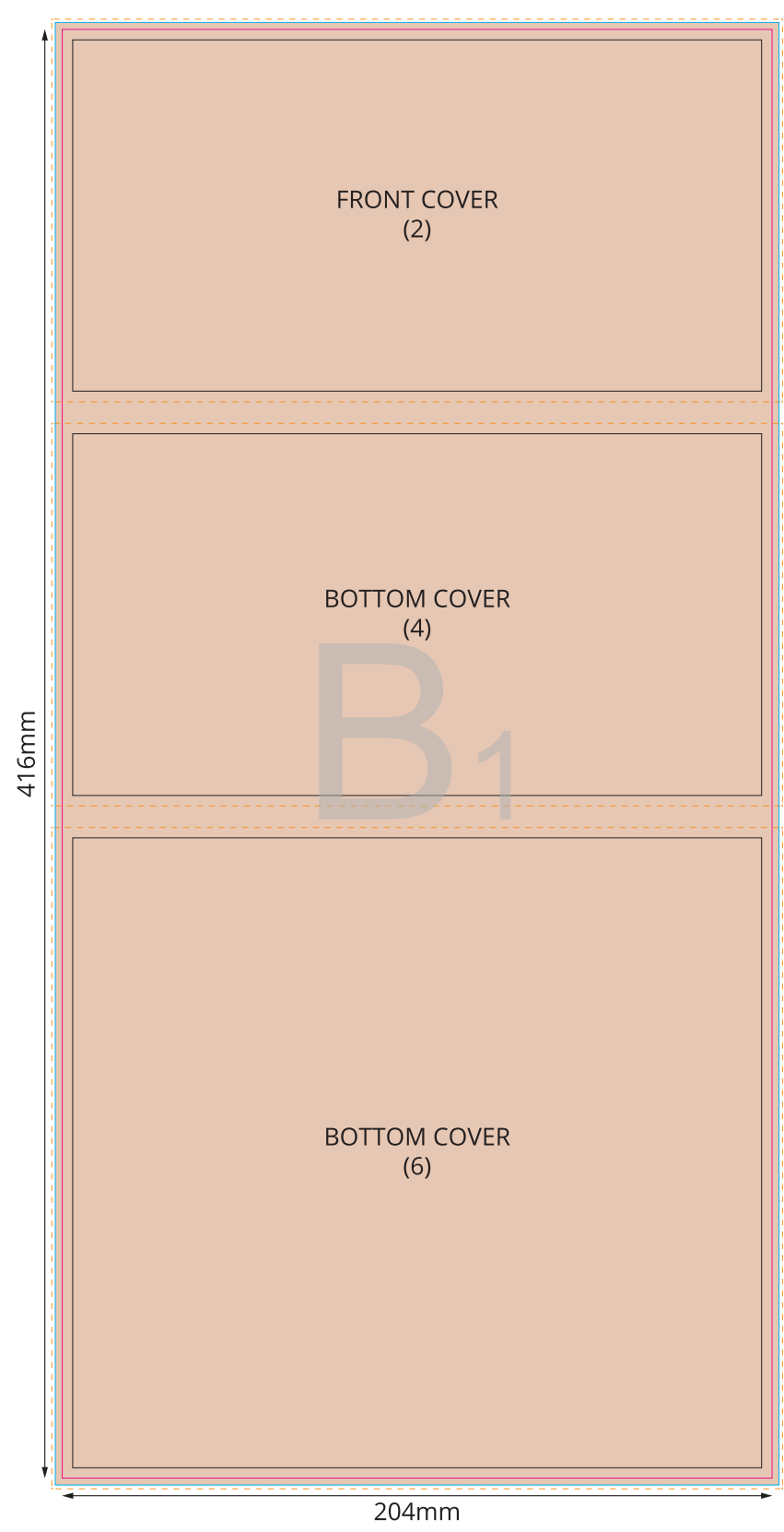
COVER



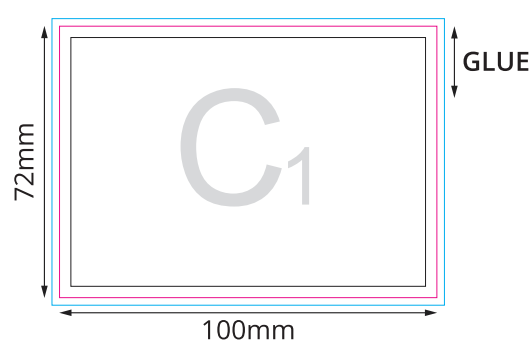
OUTER COVER



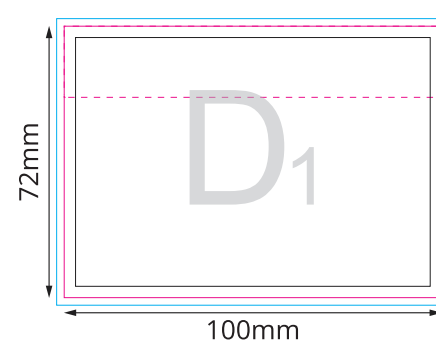
INNER COVER



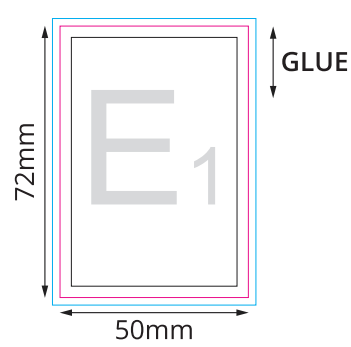
STICKY NOTES



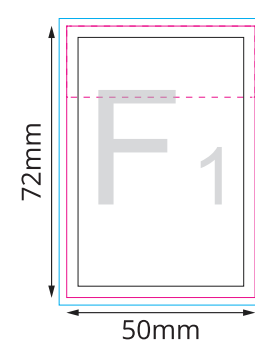
BOTTOM SHEET



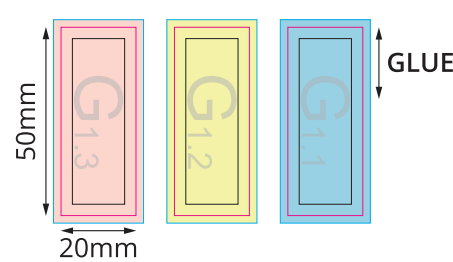
STICKY NOTES



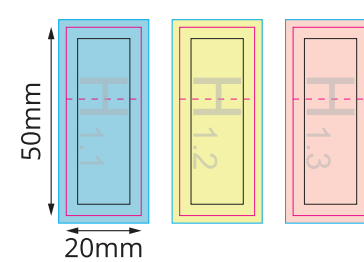
BOTTOM SHEET



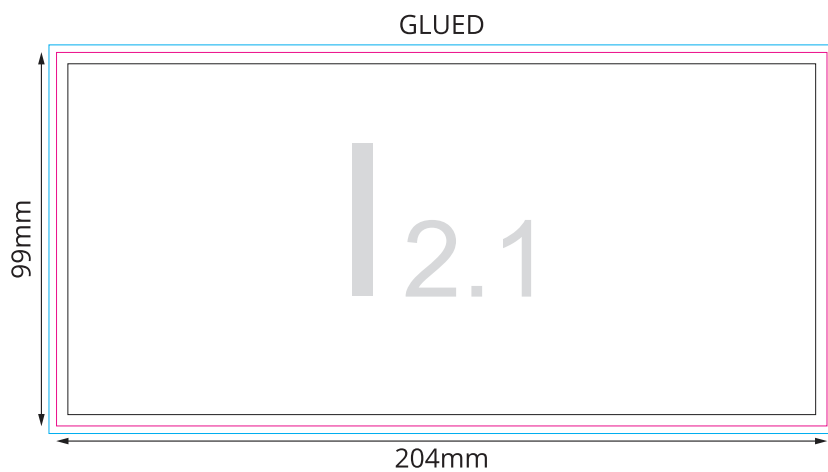
PAPER MARKERS



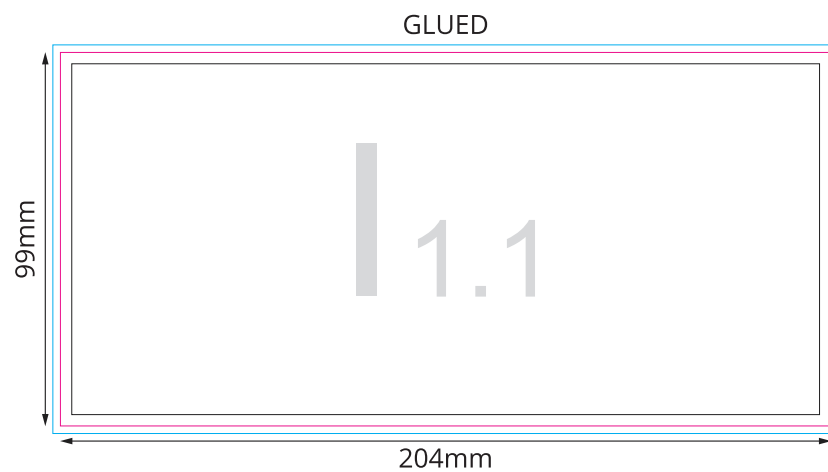
BOTTOM SHEET



CALENDAR SHEETS - BACK



CALENDAR SHEETS - FRONT



Key:

- Finished component size
- Bleed area. In case of bleed imprint, please extend it until blue line
- Safe print area. Keep all important text and graphics within this area
- Solid board
- Edge of solid board

A₁

B₁

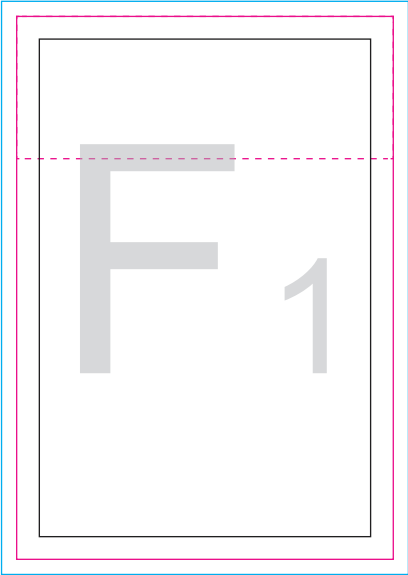


C_1

A diagram showing a rectangular frame with a dashed pink line and the text "D₁". The frame is composed of a solid black inner border and a solid blue outer border. A horizontal dashed pink line is drawn across the frame, passing through the middle of the letter "D". The text "D₁" is centered within the frame, with the "D" being significantly larger than the subscript "1".

D₁

E₁



F 1

A handwriting practice box for the letter 'F'. The box is defined by a blue outer border and a pink inner border. Inside the pink border, there is a black rectangular frame. A horizontal dashed pink line is drawn across the top of the black frame, indicating the top line for writing. The letter 'F' is shown in a large, grey, sans-serif font, with its top horizontal bar aligned with the dashed line. To the right of the 'F', the number '1' is shown in a smaller, grey, sans-serif font, indicating the first stroke of the letter.

G
51.1

G
51.2

G
5
1.
3

1.1

FH

1.2



FH

1.3

1.1

12.1

1.2

12.2

1.3

| 2.3

1.4

12.4

1.5

| 2.5

1.6

12.6

1.7

12.7

1.8

12.8

1.9

12.9

| 1.10

| 2.10

1.11

| 2.11

| 1.12

| 2.12