

JRCJames Ross Collection
WeAr the Future

James Ross Collection

SCHEMA TECNICA

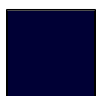
JRCJames Ross Collection
WeAr the Future

Felpa Dallas Lady

**Felpa 80% cotone - 20% poliestere**

- Collo a lupetto
- Zip lunga
- Due tasche aperte a filetto
- Collo, polsini e fondo maglia in costina elasticizzata
- Nastro di rinforzo interno collo
- Cuciture ribattute

S - M - L - XL

Colori e codici articolo:

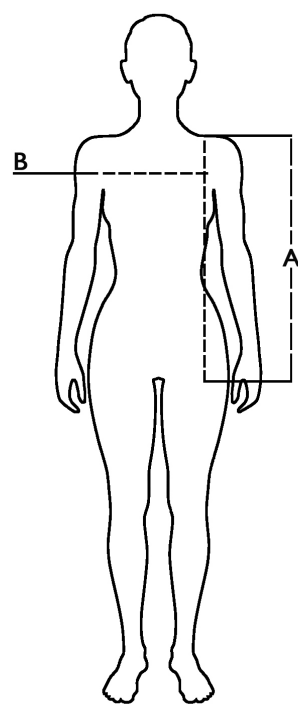
994690 NAVY






994691 BLACK

Tabella misure

| Sizes (+/- 5%) | A front length | B chest |
|----------------|----------------|---------|
| S | 62 | 46 |
| M | 64 | 48 |
| L | 66 | 50 |
| XL | 68 | 52 |

**Descrizione tecnica**

| | Composizione / Fabric Composit |  g/m ² |
|-------------------------------------|--|--|
| Tessuto esterno/Shell | 80% Cotone 20% Poliestere | 280 |
| Imballo/Packages |  20 pcs | |
| Istruzioni di Lavaggio / Care Label |  | |

Rapporto di Prova

Effettuato da Ritex divisione Ecochem spa N. 21RT02403 del 14.07.21

Cat. DPI/PPE category I Norme **CE** e livelli di protezione/EC standards and protection levels EN ISO 13688:2013