

JRCJames Ross Collection
WeAr the Future

James Ross Collection


SCHEMA TECNICA


JRCJames Ross Collection
WeAr the Future

Giubbotto Sestriere Lady


**Giubbino donna in soft shell****a due strati impermeabile e traspirante**

- 95% poliestere - 5% elastane
- Impermeabilità 6000 mm/H₂O
- Fodera in poliestere con cuciture verticali
- Imbottitura in poliestere
- Cappuccio imbottito con coulisse
- Cerniere nastrate YKK
- Una tasca sul petto con zip
- Due tasche esterne con zip
- Una tasca interna portafoglio con velcro
- Polsini regolabili con velcro
- Coulisse al fondo

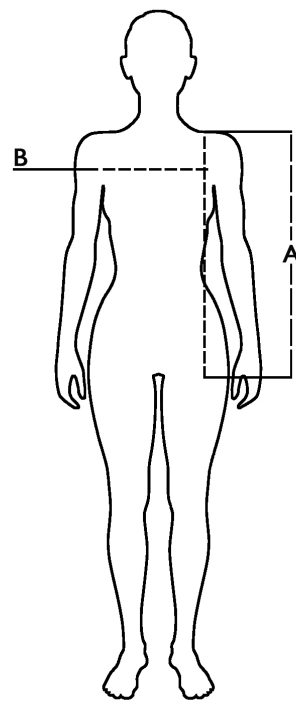
S - M - L - XL**Colori e codici articolo:**
 993910 NAVY




 993911 BLACK

 993912 RED

 993913 ROYAL
Tabella misure

| Sizes (+/- 5%) | A front length | B chest |
|-------------------|----------------------|------------|
| S | 61,5 | 49 |
| M | 64 | 51 |
| L | 66,5 | 53 |
| XL | 69 | 55 |
| XXL | 71,5 | 57 |

**Descrizione tecnica**

| | Composizione / Fabric Composit |  g/m ² |
|-------------------------------------|--|--|
| Tessuto esterno/Shell | 95% poliestere 5% elastane | 320 |
| Fodera/Lining | 100% poliestere | 50 |
| Imbottitura/Padding | 100% poliestere | 120 |
| Imballo/Packages |  10 pcs | |
| Istruzioni di Lavaggio / Care Label |  | |

Rapporto di Prova

Effettuato da Ritex divisione Ecochem spa N. 21RT02110 del 05.07.21

Cat. DPI/PPE category I Norme **CE** e livelli di protezione/EC standards and protection levels EN ISO 13688:2013