

DETTAGLI

- Foderato
- 2 tasche
- 4 bottoni
- Fascette regolabili

COLORE

U32 Nero

TESSUTO

100% poliestere
160 g / m²

TAGLIE

XS ÷ XXXL
Regular Fit



Le misure indicate si riferiscono alle taglie **S** per i capi femminili, **L** per i capi maschili. Per i capi a taglia unica le misure indicate sono effettive.

Gilet nero classico.

COLORI DISPONIBILI



U32 Nero

TABELLE TAGLIE
E CORRISPONDENZE

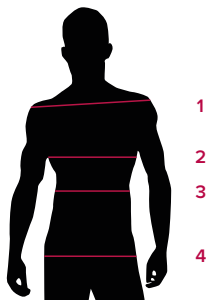
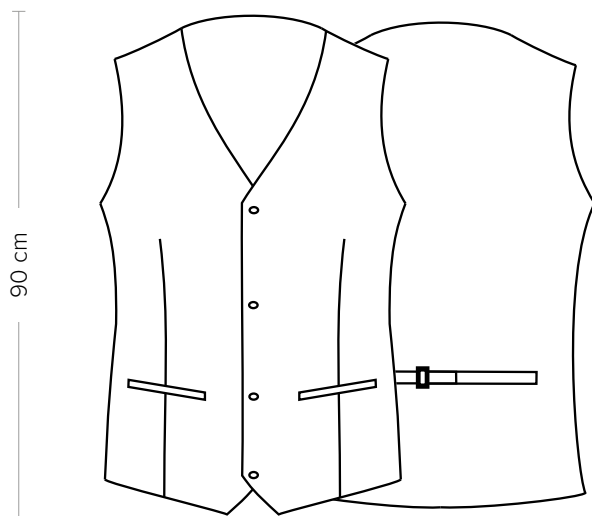


TABELLA ST-E3 REGULAR FIT							
TAGLIA	XS	S	M	L	XL	XXL	XXXL
1 - SPALLE	35	36	37	38	40	42	43
2 - CIRCONFERENZA TORACE	80-84	85-90	91-96	97-102	103-110	111-118	119-125
3 - CIRCONFERENZA VITA	99-83	84-89	90-95	96-100	101-108	109-116	117-124
4 - CIRCONFERENZA BACINO	99-83	84-89	90-95	96-100	101-108	109-116	117-124

GUIDA ALLE TAGLIE **1)** Prendere le misure anatomiche (corpo con abbigliamento intimo) senza stringere mantenendo ben teso il metro. **Nota:** nel caso vogliate indossare dei camici già con dell'abbigliamento sotto prendete le misure già abbigliati. **2)** Nel caso tra le misure prese vi fosse una misura a cavallo fra 2 taglie vi consigliamo di prendere quella più grande. **3)** Le misure della tabella sono espresse in centimetri.



DETAILS

- Lined
- 2 pockets
- 4 buttons
- Adjustable buckle

COLOURS

U32 Black

FABRIC

100% polyester
160 g / m²

SIZES

XS ÷ XXXL
Regular Fit



The measures indicated refer to sizes **S** for women, **L** for men. For one-size-fits-all garments, the measurements indicated are effective.

Classic black waistcoat.

AVAILABLE COLOURS



U32 Black

SIZE TABLES
AND CORRESPONDENCES

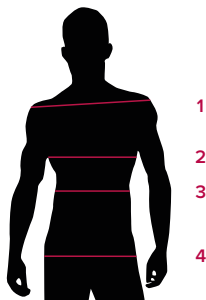


TABLE ST-E3 REGULAR FIT							
SIZE	XS	S	M	L	XL	XXL	XXXL
1 - SHOULDERS	35	36	37	38	40	42	43
2 - CHEST CIRCUMFERENCE	80-84	85-90	91-96	97-102	103-110	111-118	119-125
3 - WAIST CIRCUMFERENCE	99-83	84-89	90-95	96-100	101-108	109-116	117-124
4 - HIPS CIRCUMFERENCE	99-83	84-89	90-95	96-100	101-108	109-116	117-124

SIZE GUIDE **1)** Take the anatomical measurements (body with underwear) without tightening, keeping the measuring tape taut. Note: in case you want to wear of the gowns already with the clothing underneath take the measurements already dressed. **2)** If there is a measure between 2 sizes between the measurements taken, we advise you to take the bigger one. **3)** The measurements in the table are expressed in centimeters.